

**Carestream (Kodak)
Dental X-ray & Imaging Software:
Trophy® Windows Viewer.**



Terms & Conditions

The following terms and conditions apply to anyone using this guide:

We reserve the right to make changes and improvements to the information given in this guide at any time, and without notice.

All trademarks used are acknowledged as being the properties of their respective owners.

The X-ray image used throughout this guide comes courtesy of Kodak (Trophy).

Disclaimer

Radford Heath Ltd. provides the information in this guide in good faith for the general interest of its users only. This is a simple pictorial guide and by no means a definitive one and is not meant to substitute Kodak's (Trophy) own help instructions. Should problems arise whilst using your equipment always use the help files provided with your software or seek advice from your Kodak representative or their support team: <http://www.kodakdental.com/en/gbIndex.html> (europedental@kodak.com).

Whilst every effort has been made to ensure that the content is free of any errors, and is as accurate as possible, all information is provided 'as is' without guarantee or warranty of any kind.

You use this documents content at your own risk and assume full responsibility to judge whether it is accurate or complete before using it for whatever purpose.

Ensure that any software you are about to use is from a trusted source. If in doubt, do not use it. In no event shall Radford Heath Ltd be liable for any consequential, incidental or direct damages suffered in the course of using the content from this guide.

We are not responsible for the content or reliability of any linked web sites and we do not necessarily endorse the views expressed within them.

We do not accept responsibility for any virus contracted as a result of visiting any linked web site and will not be liable for any loss, damage, costs, expenses or claims suffered or incurred by any person as a consequence of the presence of any virus or similar item on any web site.

Copyright

All text and graphics (unless otherwise indicated) in this guide are copy righted: © Radford Heath Ltd. Save to the extent expressly permitted below, the context of these pages may not be reproduced or transmitted or be made available on a network in whole or in part without the prior consent of Radford Heath Ltd. These pages may be downloaded or printed for your personal and private use provided that you make no alteration to any of these pages and you do not use any part of the pages in any work or publication in whatever medium stored.

Contents

<i>Terms & Conditions</i> _____	2
Disclaimer _____	2
Copyright _____	2
<i>Contents</i> _____	3
<i>How to install the TWV[®] v6.04 using Microsoft Windows XP</i> _____	4
What is Trophy[®] Windows? _____	5
What does it all mean? _____	5
<i>Using the Trophy[®] Windows Viewer (TWV)</i> _____	5

How to install the TWV® v6.04 using Microsoft Windows XP



[Click on the image to download TWV](#)

Welcome to Kodak's Trophy® Windows Imaging Products. It is most likely that you will have been sent an Email or a CD containing some Trophy x-rays and you would like to be able to see them. Well before you try to view any Trophy images of file types .ceph, .pano, .rvg, .tif, and .sc, you will need to extract and save the v6.04 Trophy Viewer to your PC.

For those who are not comfortable at manipulating PC files steps 1-3 below will explain how to perform this task. Step 4 will explain how to associate the Trophy image files with the Trophy viewer program so that you will be able to view them. If you have any problems with any of the steps below do not hesitate to contact the person who sent you the files, as they will be able to help you further.

- 1) Using the "Explore" file manager create a folder to store the Trophy® viewer on your PC's hard-drive. Example:
 - a) Right-click on "Start" and select "Explore"
 - b) In the left panel of Explore left-click on C: then right-click and select Expand.
 - c) Find and left-click on "Program Files"
 - d) In the top menu bar select "File > New > Folder".
 - e) Name the new folder "Trophy" i.e. C:\Program Files\Trophy.
- 2) Save the file called TWV.ZIP in the newly created Trophy folder. Example:
 - a) From Outlook's top menu bar select File > Save Attachments and navigate to the new Trophy folder and Save the zip file.
- 3) Extract TWV.exe and save it in the newly created Trophy folder. Example:
 - a) Using Explore click on TWV.zip to open the compressed file
 - b) You will find a file inside this one called TWV.exe. In the left panel you will see an option to 'Extract all files' - select this option.
 - c) Follow the steps of the pop up wizard using 'Browse' to locate the new Trophy folder C:\Program Files\Trophy. Save TWV.exe in the Trophy folder.
- 4) Click on a Trophy® image file. Your PC will not recognize the file type and a pop up window will prompt you to select a program on your PC that will be able to deal with this type of file.
 - a) Use the 'Browse' option to locate the TWV.exe file in C:\Program Files\Trophy. Now you will be able to view your Trophy images.

What is Trophy® Windows?

Browse our [Full Trophy Windows Software Guide](#)

Find more information about this product on the Carestream Health web site at <http://www.kodakdental.com/en/gbIndex.html>

What does it all mean?

Abbreviation	Description	Equipment Used
RVG	RadioVisioGraphy® Intra-oral digital radiography (X-Ray)	Trophy Elitys® or equivalent
STV	Intra-oral digital camera image	Dürr's cordless VISTACAMCL® or equivalent
PANO	Panoramic Extra-oral digital radiography (X-Ray) Note: Magnification factor of 1.27	Trophypan® or equivalent
CEPH	Cephalometric one shot extra-oral digital radiography	Trophypan® or equivalent
TIF	Tagged Image File Format image	External digital camera

Using the Trophy® Windows Viewer (TWV)

The free TWV program allows individuals who do not have access to the full Trophy® Windows software to be able to view Trophy® images.

The viewer TWV.exe has a file size of 1.536Kbits (in zipped form is 648Kbits in size).

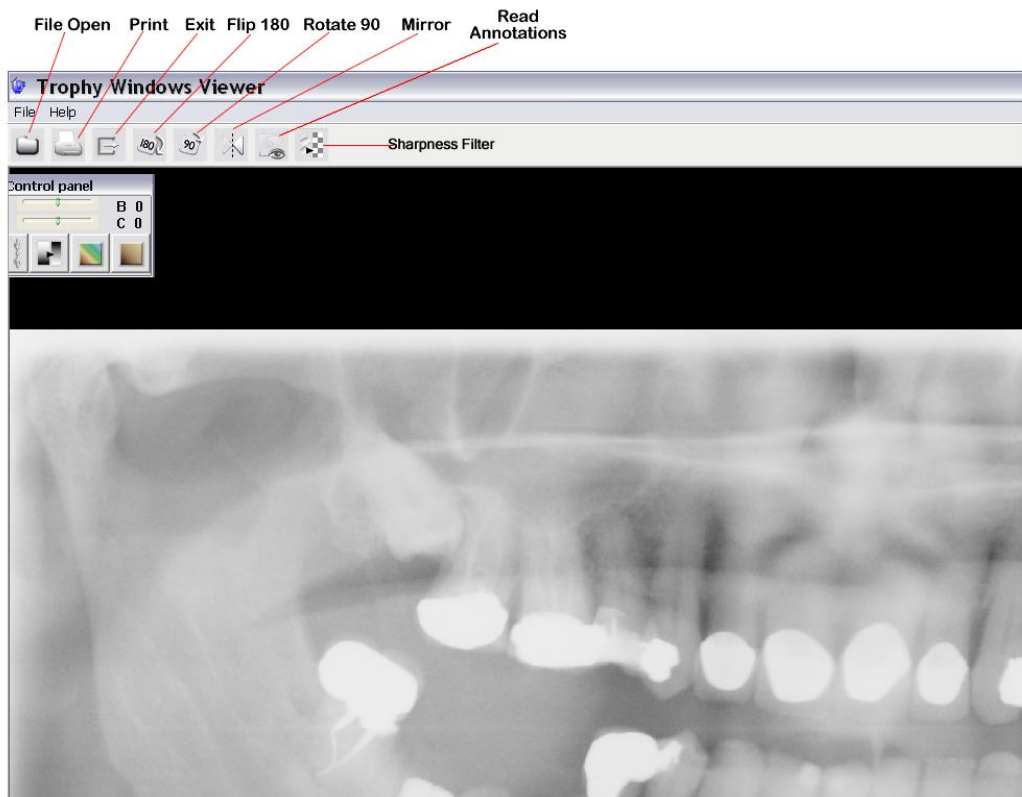
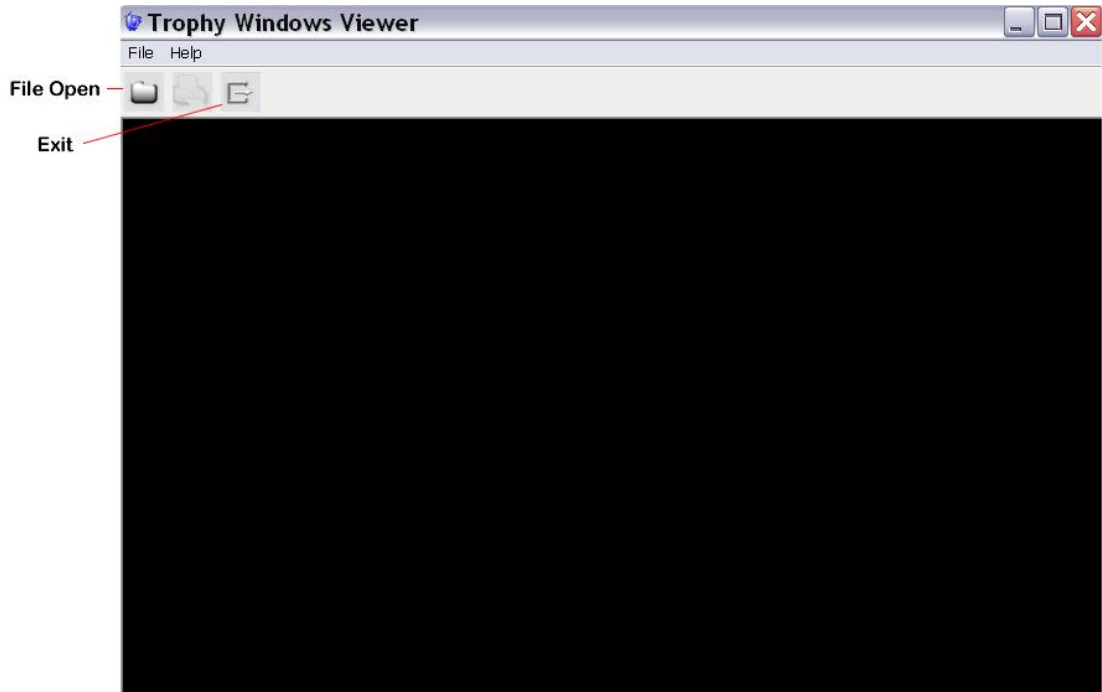
“Pano” x-ray image file size = 2-3 MB.



[Trophy Viewer Visual Demo](#) (requires Adobe/Macromedia [Flash player](#))

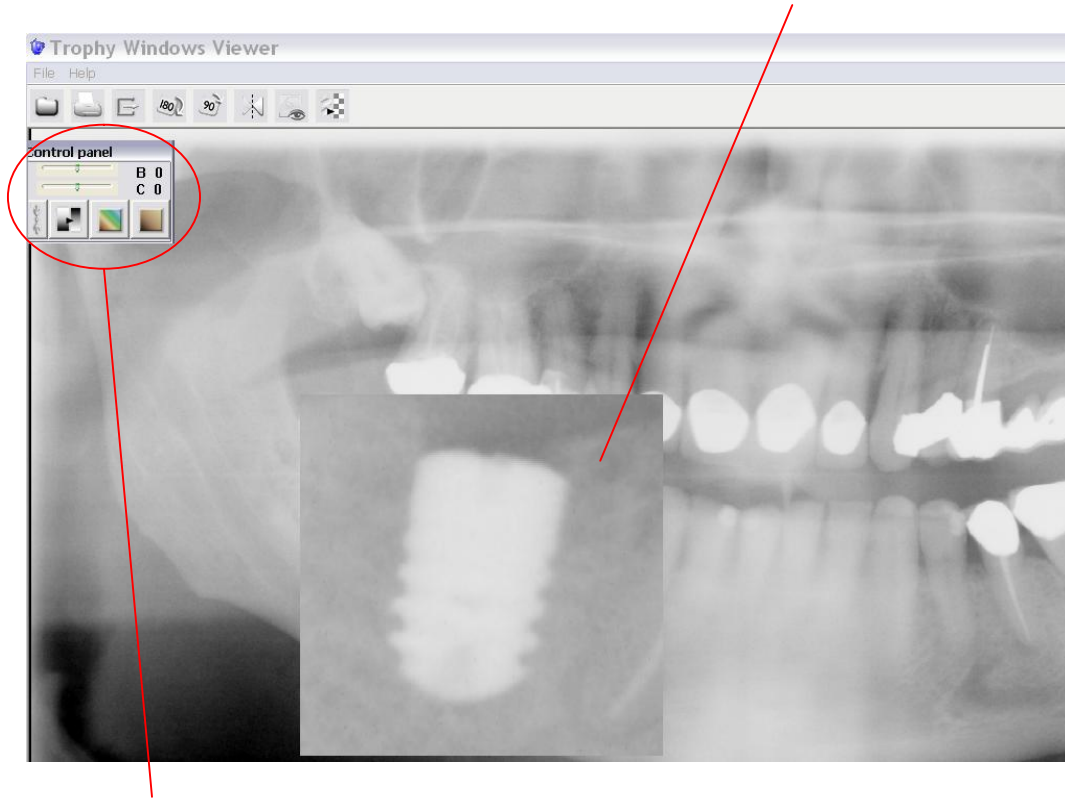
The TWV shares some of the basic menu items as the full Trophy® Windows version.

A Radford Heath Dental Guide.

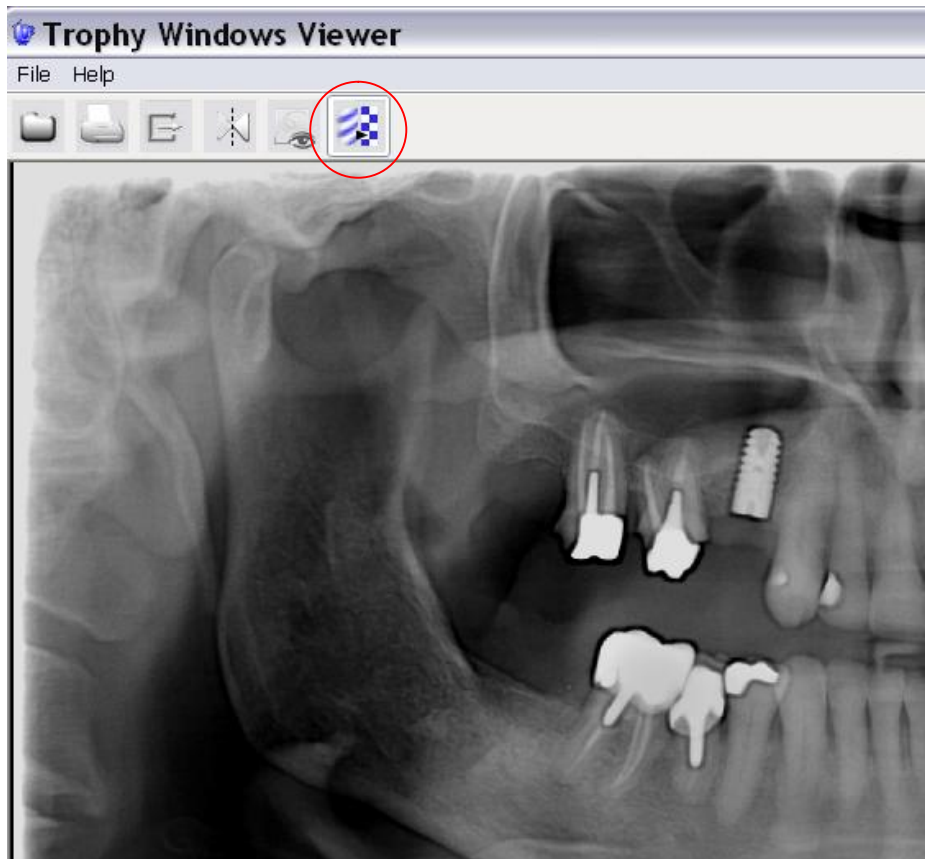


A Radford Heath Dental Guide.

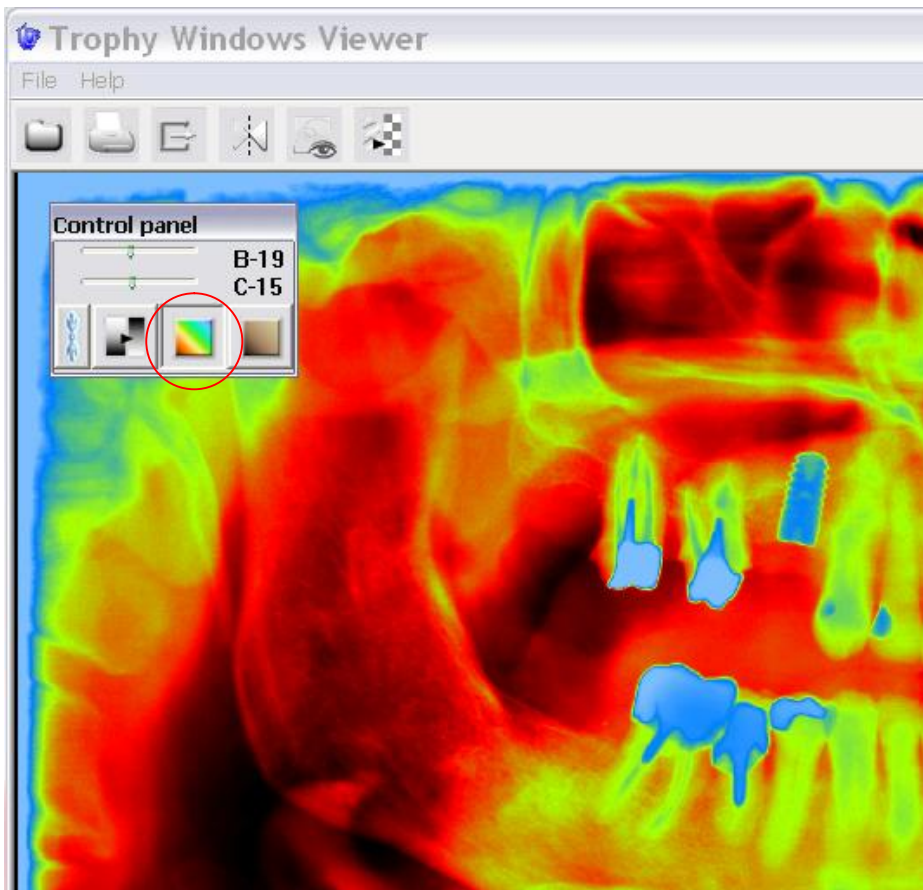
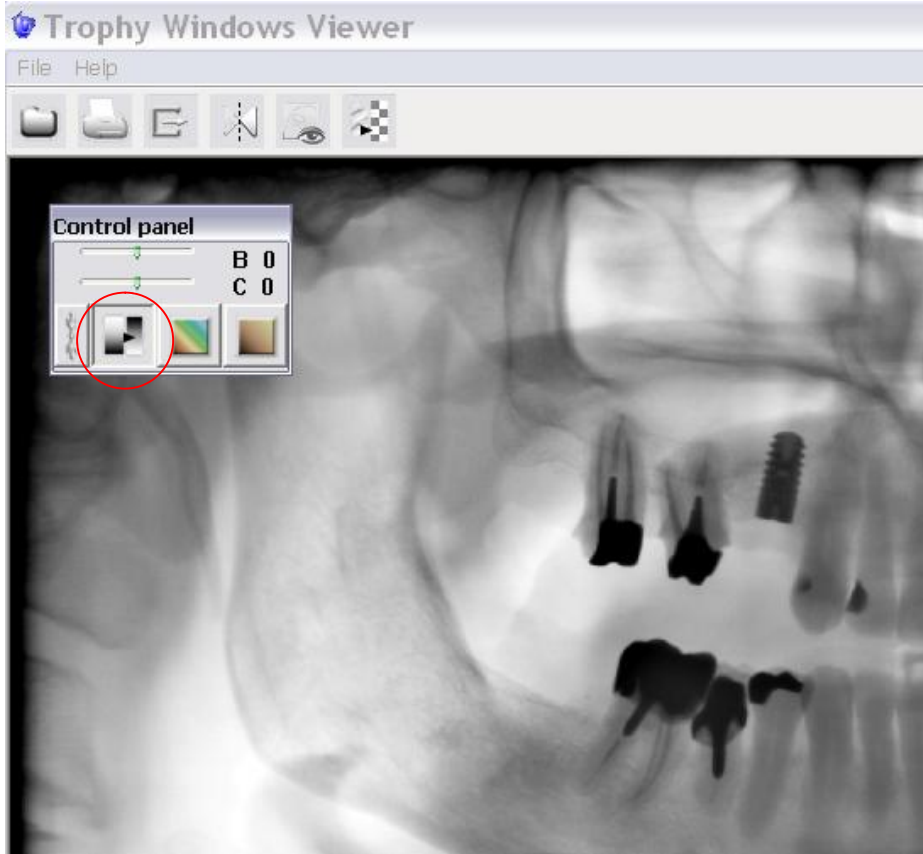
And there is a highlight or magnify function as well (left-click mouse button)



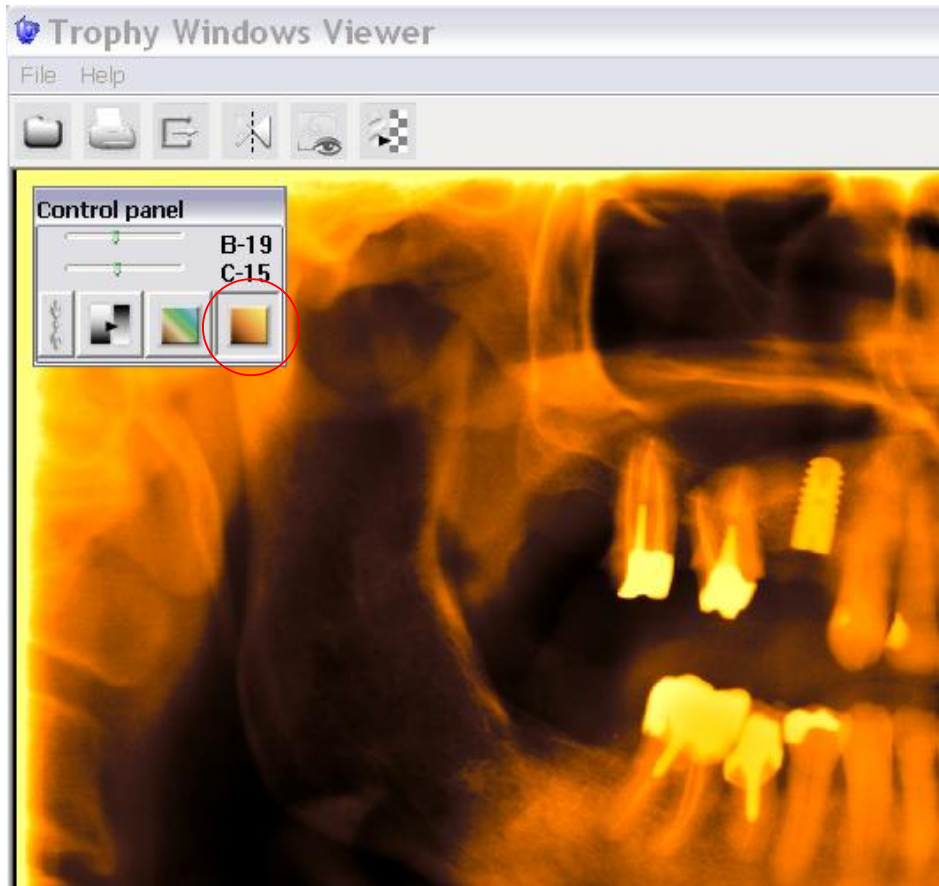
The control panel buttons (sometimes hidden behind the image window) set the negative image, colour image, and sepia image properties, all of which come with an adjustable brightness and contrast sliders that can be reset with the double arrow button.



A Radford Heath Dental Guide.



A Radford Heath Dental Guide.



Right-click mouse button gives image properties such as patient name, date, and x-ray strength.

